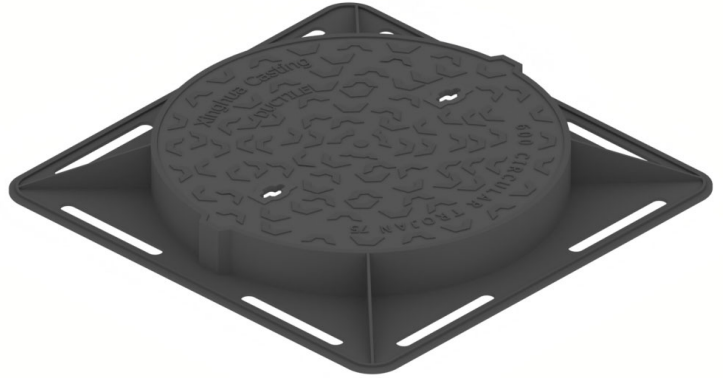


XH SR10001 - Ductile Iron Manhole Covers & Frames

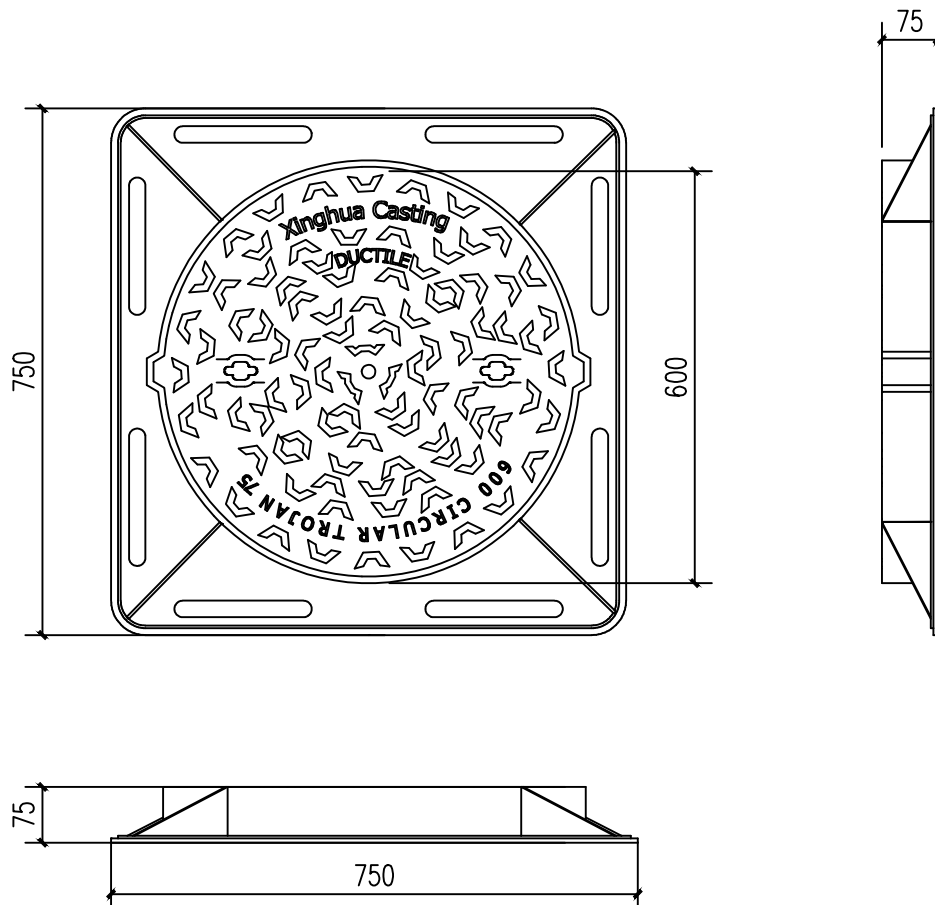
KEY FEATURES

- BSI Kitemark certified to BS EN124 2015
- Badging e.g. FW, SW
- Black coated finish



XH SR10001 - Specifications

Product Weight (Kg)	Clear Opening(mm)	Overall Dimensions(mm)	Depth(mm)	Load Rating
55	Φ600	750*750	75	B125



XH SR10001 / 2024-8-31



As our products are continually being improved, product features and dimensions may change at any time without notice.

TEL: +86 15621699355 WhatsApp: +86 15621699355 E-mail: annama@xinghuacasting.cn